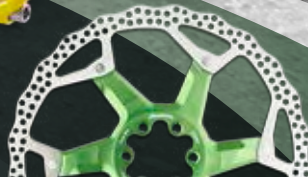




Reverse
components

RIDE REVERSE!



QUALITY
PASSION
ENGINEERING



Stefan Garlicki, Solid Bikes Pro Team Rider 🇸🇰

Photo by Simon Steinhilber



Photo by Fabian Rapp

Nico Vink, Reverse Pro Team Rider 🇧🇪



Photo by Fabian Rapp

Benny Strasser & Fabian Fader, Reverse Pro Team Rider 🇩🇪

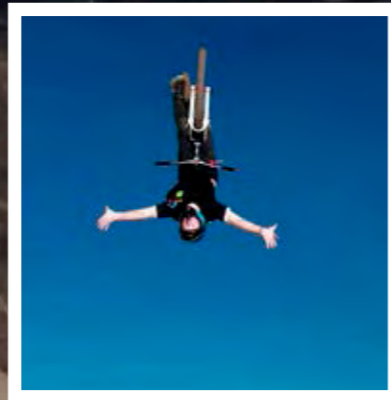


Photo by Luisa Jungheim

Sören Krahl, Reverse Team Rider 🇩🇪



Hannes Slavik, Reverse Pro Team Rider 🇩🇪



Photo by Dave Trumppore

Tracey und Mick Hannah, Reverse Pro Team Rider 🇬🇧



Photo by Fabian Rapp

Bobby Root, Reverse Pro Team Rider 🇺🇸



Photo by Fabian Rapp

Joshua Barth, Reverse Pro Team Rider 🇩🇪

Photo by Markus Slavik



Reverse RCC Handlebar, Page 7



Reverse RCC Handlebar, Page 7



Reverse Seatpost RCC 309, Page 28



Reverse Chainstay cover, Page 33

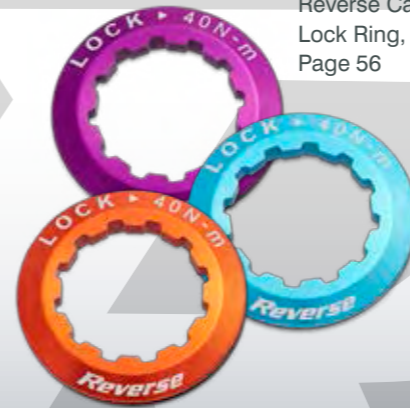


NEW STUFF!!!

Reverse Base stem, Page 13



Reverse Cassette Lock Ring, Page 56



for more products
www.reverse-components.com

Reverse Rims, Page 62



Reverse Chain Guides, Page 43



Reverse RCC 810mm DH Carbon



Features

- 810mm wide
- 9° back sweep
- 6° up sweep
- Ø 31,8mm
- Rise: 25mm
- Weight: 225g*

149,90 €

Material

Full Carbon

Colours

- Diffused glossy Carbon (white, yellow, neon green Logo)
- Diffused flat Carbon (grey Logo)

Reverse RCC 750mm Carbon For XC/ENDURO use!



Features

- 750mm wide
- 9° back sweep
- 4° up sweep
- Ø 31,8mm
- Rise: 20mm
- Weight: 167g*

129,90 €

Material

Full Carbon

Colours

- Classic 3-K glossy Carbon (white, yellow, neon green Logo)
- Diffused glossy Carbon (white, yellow, neon green Logo)
- Diffused flat Carbon (grey Logo)

*Weight +/- 5% production tolerance

Reverse Base 790mm Ø 31,8mm / 760mm Ø 25,4mm



Material

AL 7075 double butted

Colours

chrome, black, titangrey, red, black-yellow, candy (paint), white (paint),

Features 760mm 49,90 €

7° back sweep
5° up sweep
Ø 25,4mm
Rise: 18mm & 38mm
Weight: 303g*

Features 790mm 59,90 €

7° back sweep
5° up sweep
Ø 31,8mm
Rise: 18mm & 35mm
Weight: 295g*

Special World Cup Race Geometry!

BASE⁷⁹⁰
WORLD CUP RACE LINE



Reverse Triple X 820mm

Material

AL 7075 double butted

Features

820mm wide Ø 31,8mm
9° back sweep Weight: 330g*
4° up sweep

79,90 €



Rise

0" matt black and purple
0.5" all colours

Colours anodized

black, titan, light-blue, chrome, dark-blue, purple, red, orange, white (paint)

*Weight +/- 5% production tolerance

for more products

www.reverse-components.com





1,5" rise

0,7" rise

Reverse Global 730mm



Material

AL 7075
double butted

Features

730mm wide
9° back sweep
5° up sweep
Ø 31,8mm
Rise: 0.7"/1.5"
Weight: 285g*

Colours

black, green, gold, sand-metallic,
titan-grey, red, purple, chrome, light
blue, dark blue, orange, white (paint)

62,90 €



Global 730mm in 0,7" and 1,5" rise
is available in all colours shown on the left side



Photo by Thomas Gilmird

Fred Austray, Reverse Team Rider



Photo by Fabian Rapp

Nico Vink, Reverse Pro Team Rider

Reverse AM Carbon 710mm For XC/AM use!



Features

710mm wide
9° back sweep
4° up sweep
Ø 31,8mm
Rise: 20mm/38mm
Weight: 176g*

Material

Full Carbon

Colours

Classic 3-K Carbon
Diffused Carbon black
(only 20mm Rise)

99,90 €

Reverse XC Light 710mm



Features

710mm wide
6° back sweep
4° up Sweep
Ø 31,8mm
Rise: 0"/0.7"
Weight: 282g*

Material

AL 7075
double butted

Colours

black, red, gold,
white (paint)

49,90 €

Reverse Black Line 760mm



Material

AL 7075 double butted

Colours

black-polished with gray decal
sandblast black in black

Features

760mm wide
9° back sweep
4° up sweep

Ø 31,8mm
Rise: 0.7"
Weight: 295g*

79,90 €



Photo by Ben Heim



Photo by Luisa Jungheim



Photo by Fabian Rapp

Reverse Base Stem Ø 25,4mm / 31,8mm

Material

AL 6061 CNC

Colours anodized

Glossy black, flat black, red, chrome,
yellow (only Ø31,8mm, paint),
dark-blue, white (paint),
orange (only Ø31,8mm)

Features

Length: 40mm
Clamping:
31,8mm, 25,4mm,
Angle: 0°, 1 1/8"
Clamp height: 38mm
Weights:
25,4mm 148g*
31,8mm 178g*

54,90 €



*Weight +/- 5%
production tolerance

for more products
www.reverse-components.com

Reverse S-Trail Stem Ø 31,8mm

Material
AL 6061 CNC

Features
Length: 50mm/60mm/70mm
Clamping: 31,8mm
Angle: 8°, 1 1/8"
Clamp height: 40mm
Weights:
50mm/120g*, 60mm/130g*,
70mm/137g* (70mm only
black, red, white)

65,90 €

Colours anodized
glossy black, red, dark-blue,
purple, gold, orange,
white (paint)

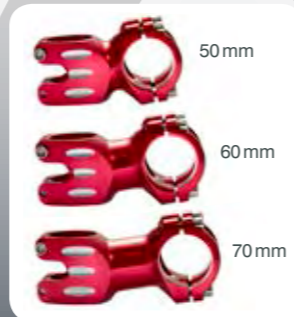


Photo by Grega Stopar

Reverse S-Trail Stem (Ø 1.5" & 1.56") for **Cannondale** Bikes

Material
AL 6061 CNC

Features
Length: 60mm/70mm
Clamping: 31,8mm
Angle: 8°
steertube size: 1.56" + 1.5"
Clamp height: 40mm
Weight: 60mm 172g / 70mm 180g

Inclusive spacer to reduce
to Ø 1.5 (2 in 1 function)

Reverse Base Stem (Ø 1.25") for **Giant** Bikes

Features
Length: 40mm
Clamping: 31,8mm
Angle: 0°
steertube size: 1.25"
Clamp height: 38mm
Weight: 160g

Colour anodized
glossy black

65,90 € (Stem & reduce spacer)

Material
AL 6061 CNC

Colour anodized
glossy black

54,90 €



Spacer also
available separately
9,90 €

**NEW! For
Cannondale
lefty forks!
1.5" + 1.56"**



Reverse Fast Lane Stem

Material

AL 6061

Features

Length: 50mm
Clamping: 31,8mm
Angle: 8° 1 1/8
Weight: 146g*

Colours anodized

Sandmetallic, glossy black, flat black, orange, chrome, red, white (paint), yellow (paint)

69,90 €



Bobby Root, Reverse Pro Team Rider

Photo by Fabio Schäfer

Reverse XC 6° Stem

Material

AL 2014

Features

Length: 60mm, 70mm, 80mm, 90mm, 100mm, 110mm
Clamping: 31,8mm 1 1/8"
Angle: Stem - Flip Flop System +6° or -6° possibly
Weight: 60mm/94g*, 70mm/99g*, 80mm/103g*, 90mm/105g*, 100mm/107g*, 110mm/112g*

49,90 €

Reverse XC 20° Stem

Material

AL 2014

Features

Length: 90mm, 100mm, 110mm
Clamping: 31,8mm 1 1/8"
Angle: 20°
Clamp height: 36mm
Weight: 90mm/135g*, 100mm/139g*, 110mm/149g*

Colours anodized

Glossy black, flat black, red, titan, white (paint)

49,90 €



Reverse Headset – 1.5" & 1 1/8"

Top cups

1.5" semi integrated top cup, reduced to 1 1/8", Ø50mm, (59g)

39,95 €



1 1/8" semi integrated top cup, Ø44mm, (38g)

39,95 €



1 1/8" Ahead top cup, Ø34mm, (38g)

40,00 €



Lower cups

49,95 €



1.5" Zero stack lower cup Ø56mm (49g) und Ø55mm, (45g)

Without "Crown Race" ring!

7,90 € per pc



Option 1:

Crown Race ring 1.5" reduced to 1 1/8", (9g) = for 1 1/8" fork.

Without "Crown Race" ring!

Choose the "Crown Race" ring you need!

Option 2:

Crown Race ring 1.5", (4g) = for 1.5" tapered fork.

49,95 €



1.5" Ahead lower cup Ø50mm, (58g).

49,95 €



1.5" semi integrated lower cup Ø50mm, reduced to 1 1/8", (39g).

With "Crown Race" ring!

49,95 €



1 1/8" semi integrated lower cup, Ø44mm, (28g).

With "Crown Race" ring!

40,00 €



1 1/8" A-Head lower cup, Ø34mm, (28g).

With "Crown Race" ring!

40,00 €

ALL TOP CUPS CAN BE COMBINED WITH THE LOWER CUPS, AND HAVE TO BE ORDERED SEPARATE. FOR 1.5" AHEAD LOWER CUP, PLEASE CHOOSE AS WELL THE "CROWN RACE" RING SEPARATELY.

Available Top Cups:

- 1.5" semi integrated top cup, reduced to 1 1/8", Ø50mm, (59g) = for 1 1/8" & 1.5" tapered forks
- 1 1/8" semi integrated top cup, Ø44mm, (38g) = for 1 1/8" fork / steer tube
- 1 1/8" A-Head top cup, Ø34mm, (38g) = for 1 1/8" fork / steer tube

Available Lower Cups:

- 1.5" Zero stack lower cups Ø56mm (49g) und Ø55mm (45g). 2 in 1 function with crown race ring 1.5" (4g) for 1.5 tapered forks
- 1.5" A-Head lower cup- Ø50mm, (58g). 2 in 1 function – with crown race ring 1.5" (4g) = for 1.5" tapered forks – with crown race ring 1.5" reduced to 1 1/8" (9g) = for 1 1/8" forks/steer tubes
- 1.5" semi integrated lower cup Ø50mm, reduced to 1 1/8", (39g) = for 1 1/8" fork / steer tubes
- 1 1/8" semi integrated lower cup, Ø44mm, (28g) = for 1 1/8" fork/steer tube
- 1 1/8" A-Head lower cup, Ø34mm, (28g) = for 1 1/8" forks/steer tube

Headset Twister – 1 1/8" Superlight 66g

Semi-integrated

1 1/8", AL 7075, Ø 44mm, stack height 5,2mm, Weight: 66g incl. top cap and alloy screw Colours anodized: black, light blue, green, red, gold

Ahead

1 1/8" AL 7075, Ø 34mm, stack height 21mm, Weight: 66g incl. top cap and alloy screw Colours anodized: black, light blue, green, red, gold

49,90 €



Hannes Slavik, Reverse Pro Team Rider 



Heike Schmid, Peter Schmid, Daniel Gaub, Reverse Company 

Reverse Stamp Lock On Grip

Material

rubber & alloy clamp rings

Features

Length: 135mm

Ø 30mm

Weight: 101g

Colours

Grip rubbers: black, yellow, white, green

Alloy clamp rings: silver polished, red, apple green, gold, white, yellow, black, purple, blue, green, orange

19,99€



for more products
www.reverse-components.com

Reverse Spin Grip

Material

rubber & alloy clamp rings

Features

Length: 135mm

Ø 30mm

Weight: 103g

Colours

Grip rubbers: black, green, red

19,99 €



Reverse Stamp Basic

Material

rubber

Colours

black

Features

Length: 125mm

Ø 31mm

Weight: 102g

5,90 €



Reverse King Size Grip

Material

special silicon rubber & alloy clamp rings

Features

Length: 145mm

Ø 33mm, **EXTRA BIG!**

Weight: 122g

Colours

Grip rubbers: black

29,90 €



Reverse
components

Reverse Bar Ends

Material

Alloy

Features

Set/2pc

Weight: 31g pair

Compatible to all

Reverse Lock On Grips!

Colors

black, red, darkblue, lightblue,
lightgreen, darkgreen, orange,
purple, silver polished, gold,
yellow, white (paint)

12,90 €



Fred Austruy, Reverse Pro Team Rider

Reverse Classic Lock On Grip

Material
rubber & alloy clamp rings

Features
Length: 130mm
Ø 29mm
Weight: 105g

Colours
Grip rubbers:
black, white, purple

Alloy clamp rings:
silver polished, red, apple green,
gold, white, yellow, black,
purple, blue, green,
orange

19,99 €



Reverse Ahead Caps

Material
Alloy

Features
Weight: 7g
including bolt

Colours
black, red, gold, darkblue,
lightblue, green, orange,
purple

8,90 €



Reverse Classic Lock On Grip

Material
rubber & alloy clamp rings

Features
Length: 130mm
Ø 28mm
Weight: 80g

19,99 €

Colours
Grip rubber: black
Alloy clamp rings: black, red,
blue, silver polished, white



Reverse Classic Lock On Grip

Material
rubber & alloy clamp rings

Features
Length: 130mm
Ø 31mm
Weight: 114g

19,99 €

Colors
Grip rubber: black
Alloy clamp rings: red, blue,
white, silver polished, black



Luca Biwer, Reverse Team Rider

Reverse Fort Will Style

Material 32,90 €

7mm CrMo Rail
Special Vinyl cover

Features

Size 270mm x 125mm
Weight: 238g

Colours

grey-black, black-white,
black-green, black-orange,
black-red, black-yellow,
black-candy, black-grey, white-black,
white-orange, white-red, white-blue



Reverse Fort Will

Material

7mm CrMo Rail
Special Vinyl cover

Features

Size 270mm x 125mm
Weight: 238g
Titanium version 206g

Colours

black-white (also available with titanium Rail),
white-black (also available with titanium Rail),
white-blue, black-yellow, black-green

32,90 €



Reverse Sattle AM

Material 49,90 €

7mm CrMo Rail
High quality cover
with Kevlar protection corners

Features

Size 270mm x 143mm
Weight: 259g

Colours

black-grey, black-white, black-neon green



Comfortable!

Reverse All Mountain saddle
with air ventilation hole for
heat exchange!



Nico Vink, Reverse Pro Team Rider 



Reverse Seatpost RCC 309 / RCC 316

Material
Carbon & Alloy Head

Colours
diffused Carbon glossy
black with white, yellow,
neon green Logo

Features
Length: 400mm
Ø 31,6mm/30,9mm
Weight: 218g*

diffused Carbon flat black
with grey Logo

99,90 €



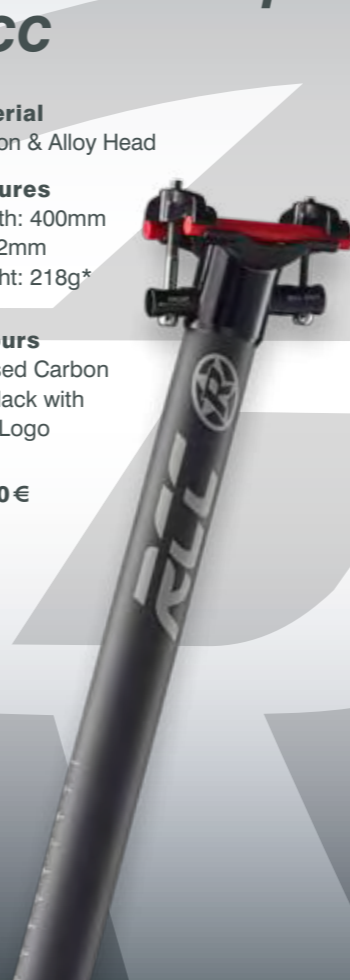
Reverse Seatpost RCC

Material
Carbon & Alloy Head

Features
Length: 400mm
Ø 27,2mm
Weight: 218g*

Colours
diffused Carbon
flat black with
grey Logo

99,90 €



Reverse Seatpost XC Carbon Alloy

Material
Carbon & Alloy Head

Features
Length: 400mm
Ø 31,6mm/30,9mm
Weight:
218g* (400mm)

Colours
black classic
3-K Carbon

99,90 €



Reverse Seatpost Superlight Carbon

Material
Full Carbon

Features
Carbon lay back
head - 15 mm offset
Length: 350mm
Ø 27,2mm
Weight: 179g*

Colours
black classic
3-K Carbon

109,90 €



Reverse Seatpost Style Lite

Material

AL 7075

Features

Length: 400mm
Ø 30,0mm/ 30,9mm/ 31,6mm
Weight: 263g

Colours

green-white,
black-white,
red-white,
dark blue-white,
black green,
gold-white (only in 30,9 and
31,6mm)
yellow-black (only in 30,9 and
31,6mm)

colors = anodized
white = painted

49,90 €



Reverse Seatpost Comp Lite

Material

AL 7075

Features

Length: 400mm
Ø 30,0mm/ 30,9mm/ 31,6mm
Weight: 263g

Colours anodized

purple, black, titan, red,
white (paint), orange (only
30,9mm/ 31,6mm)

39,90 €

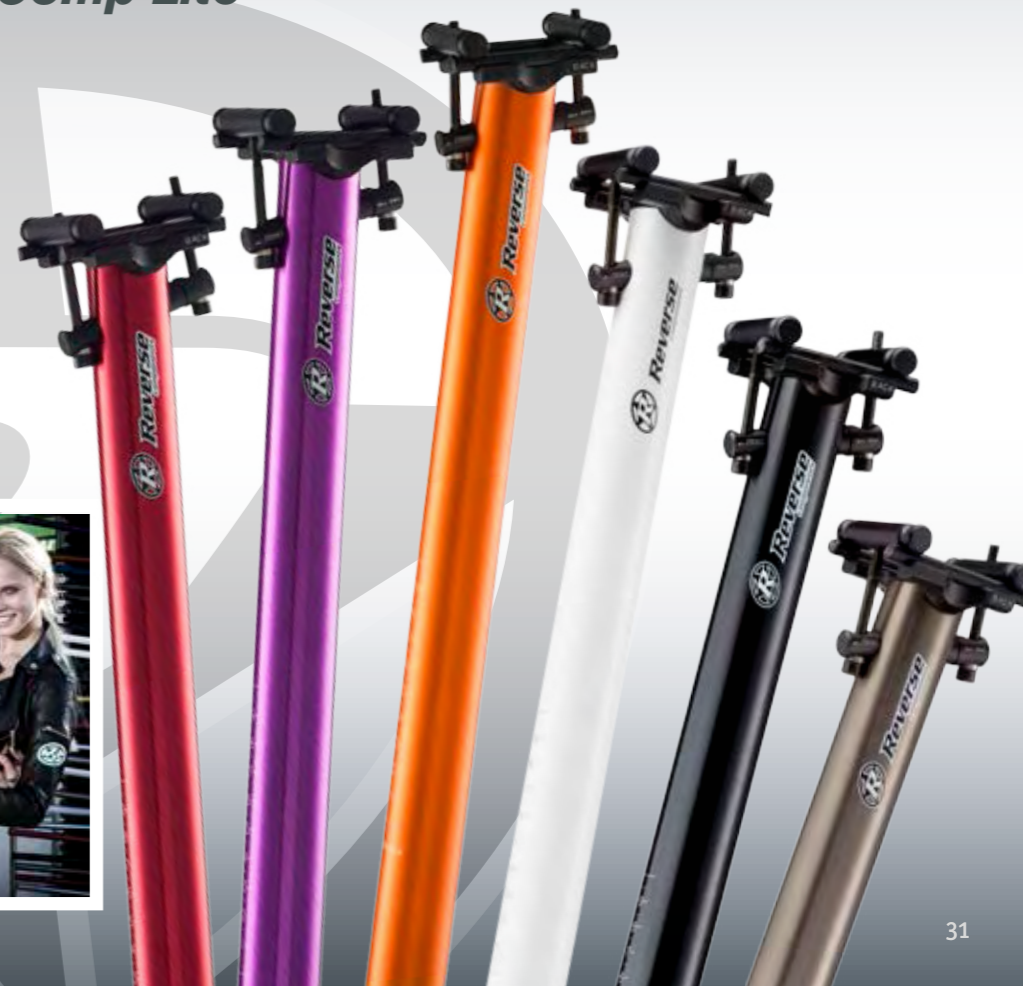


Photo by Fabian Rapp

Benny Strasser, Reverse Pro Team Rider 

Reverse Seatpost Comp

Material

6061

Features

Length: 350mm

27,2mm /

black Ø 30,9mm/ 31,6mm

Weight: 317g

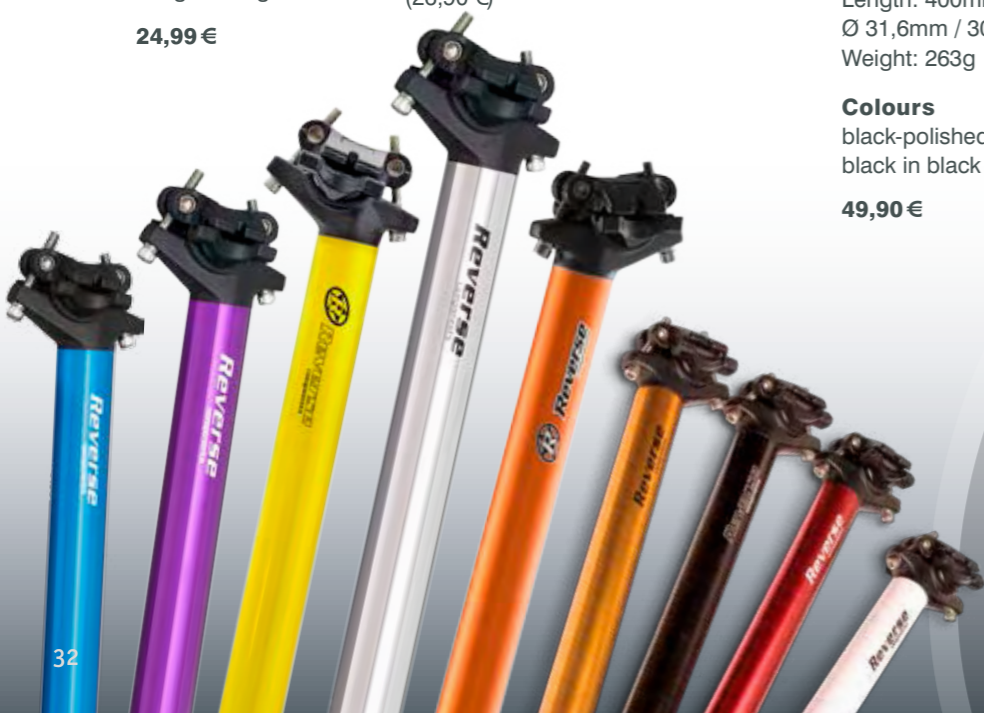
24,99 €

Colours anodized

purple, light blue, chrome,
gold, black, red, orange,

yellow (paint), white (paint)

(26,90 €)



Reverse Seatpost Black Line

Material

AL 7075

Features

Length: 400mm

Ø 31,6mm / 30,9mm

Weight: 263g

Colours

black-polished,
black in black

49,90 €



REVERSE Chainstay Cover

The chainstay cover is especially made for bikes with a bigger chainstay. We use Neoprene which is very stretchable to have a maximum size range.

Size: minimum scope 80mm, maximum scope 110mm

Range: XC / AM / FR / DH frames

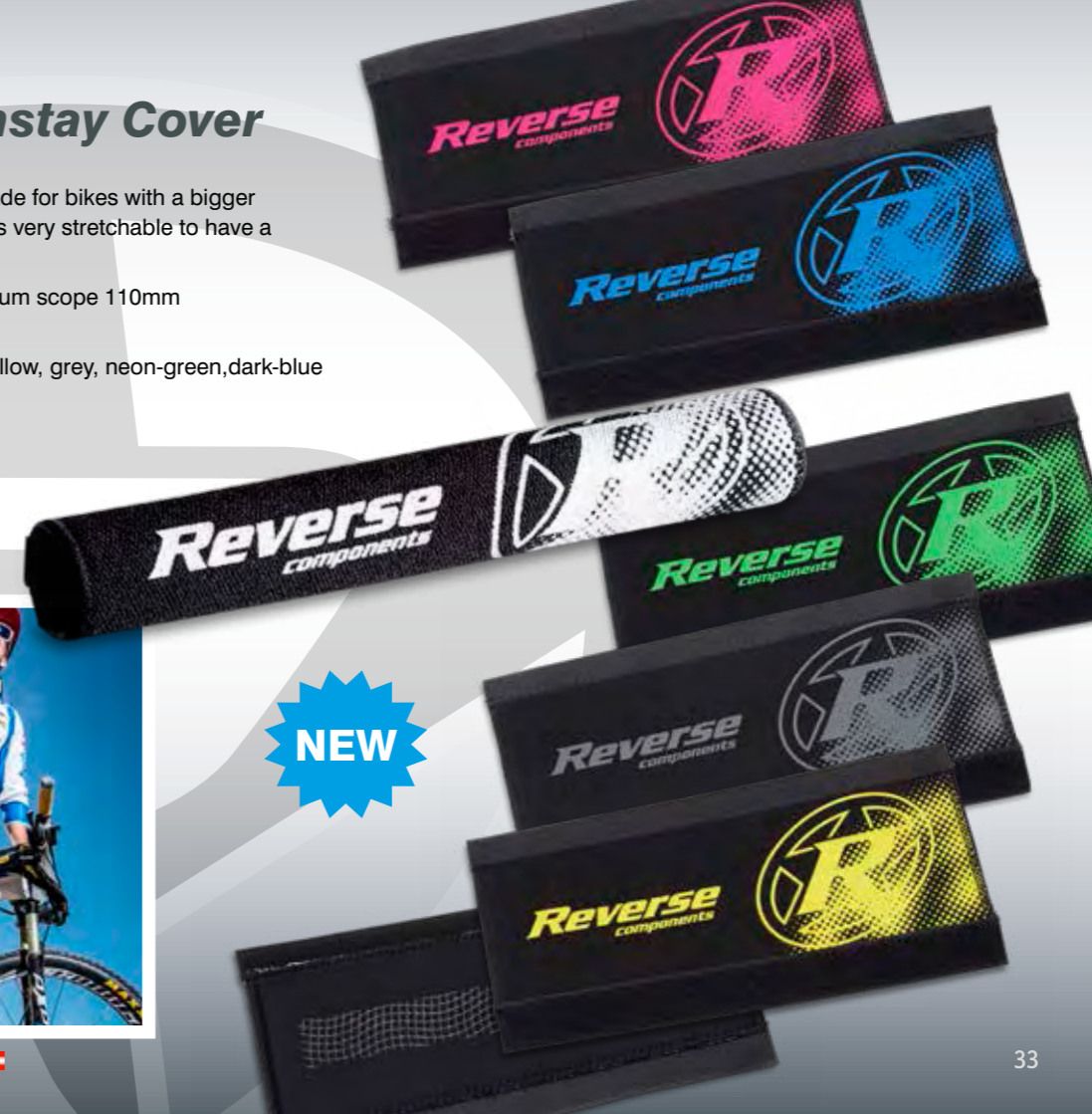
Colours: black with: white, candy, yellow, grey, neon-green, dark-blue

8,90 €



Photo by Christian Egelmair

Hannes Slavik, Reverse Pro Team Rider 



NEW

Reverse Long Life Seatclamp

Material

AL 7075 with Brass washer

Features

Size: 34,9mm
5mm Allen screw /
Quick Release
Weight: 46g

Colours

black, purple, dark-blue,
gold, light-green, dark-green,
chrome, orange sand blast,
red, light-blue, sandmetallic,
white, yellow, neon green

12,99 €

Brass washer



Reverse Bolt Seatclamp

Material

AL 7075

Features

Size: 34,9mm
5mm Allen screw
Weight: 26g

Colours

black, purple, dark-blue, light-blue,
gold, chrome, red, dark-green, light-
green, orange sand blast, sand-me-
tallic, white, yellow, neon green

9,90 €



for more products
www.reverse-components.com

Reverse Race SL chainrings

Material

AL 7075 CNC

Colours anodized

black, red, dark blue, light blue,
purple, white (paint),
white-green, black-green

45,90 €

Features

4 hole BCD 104mm

Sizes and weights:

34T/36g

36T/41g

38T/46g



Reverse 2x10 shiftable chainrings

Material

AL 7075 CNC

Colours anodized

black, red

Features

4 hole

Sizes and weights for BCD120mm:

38T (49g) **69,90 €**

40T (54g) **69,90 €**

Sizes and weights for BCD 80mm:

26T (31g) **39,90 €**

For
Sram X0/XX
2 x 10
cranks



Reverse/Solid Company Tour. Top of the World – Whistler BC



for more products

www.reverse-components.com

Reverse shiftable chainrings / superlight

Features

4 hole BCD 104mm
 Sizes and weights for BCD
 104mm/ ID 90mm:

32T (38g) —
 34T (42g) — **54,90 €**
 36T (48g) —
 38T (57g) —
 44T (76g) — **59,90 €**

Sizes and weights for BCD
 64mm/ ID 48mm:

22T (26g) —
 24T (32g) — **34,90 €**
 26T (36g) —

Material

AL 7075-T6 CNC

Colours anodized

black, red, gold

**For MTB
 cranks**



Reverse Bashguard Race SL 44T

Features

4 hole
 3mm wall thickness
 BCD 104mm
 for 44T chainrings
 Including easy mount 4-Bolt system
 Weight: 155g (with bolts)
 for triple chaining use!

Material

AL 7075

Colours
 black, white

49,90 €

Reverse Bashguard Race SL

Features

4 hole
 3mm wall thickness
 BCD 104mm
 34T/36T/38T
 Weight:
 34T = 42g
 36T = 57g
 38T = 63g

Material

AL 7075

Colours
 black, white, red,
 dark-blue, chrome

45,90 €



Reverse Legend DH short 162,5mm

Extra short length 162,5mm for more ground clearance.

Material

AL 7050 T6 crank
Ceramic bearing / bottom bracket

Colours

black, chrome

Features

4 bolt, BCD 104mm Hollow spindle
Sizes: BB 83mm
Weight: 790g including BB and Chain wheel 38T
Available in 38T, 36T, 34T

Black **249,90 €**
Chrome **269,90 €**



Reverse X-Two

Lightweight multifunction Crank. Direct mount chain wheel on the crank arm.
For double and single chain wheel use!

Material

AL 7050 T6 crank

Features

BSA thread type
175mm length

249,90 €

Colours

black

Chain wheel: 22-36T Superlight CNC **made from one piece!**
Weight: Crank with BB and 22-36T Chain wheel : 742g

For other BB or chain wheel options check our website!

NEW



Reverse Chain Guide X1

Material

6061 Alloy Plate & Bashguard

Features

X1-B ISCG for 32-38T

X1-B ISCG **Mini** for 32-36T

exchangeable Bashguard

Pulley with industrial bearing

optional available BB-mount Adaptor

ISCG & ISCG 05

7,90 €

Weights:

With Bashguard:

X1-B ISCG 05 = 207g

X1-B ISCG 05 **Mini** = 163g

X1-B ISCG = 216g

X1-B ISCG **Mini** = 173g

89,90 €

Without Bashguard:

X1 ISCG 05 = 155g

X1 ISCG = 165g

59,90 €

Spare part Bashguard **39,90 €**

X1-B Colours

black-black, black-white,
red-white, red-black

X1 Colours

black-black, black-white, red-
white, red-black



Reverse Chain Guide X11

Material

6061 Alloy Plate & Bashguard

Features

Special 11-Speed Chain Guide for all X-11 Cranks

To protect your Chain wheel-up to 32T

exchangeable Bashguard

Weights:

With Bashguard:

X-11 ISCG = 60g

X-11 ISCG 05 = 63g

59,90 €

Adaptor for BB-mount
(ISCG / ISCG 05)



for more products
www.reverse-components.com



Reverse Chain Guide X1-BR

Special
Chainguide BR -
(Bash Ring)

Made for 7-Speed
DH crank with
Bashring.

X1-BR
(without Bashguard)

59,90 €

Optional: you can mount a
Bashguard in combination
with your Bash Ring crank.

For extreme protection in
rocky, technical Downhills.



different Bashguard
sizes available

Optional available upper and lower
guides for bashring mount!

9,90 €



Reverse Black ONE Pedal Titanium



Material

Super Lightweight Alloy Pedal, titanium Axle

Colours anodized

black with black pins

**WITH
TITANIUM
AXLE**

Features

Pedal size 100*100mm Pedal height 15mm

Pin height 4mm above platform

DU-bearing & 2 Industrial bearing sealed,
exchangeable pins

Alloy body with 20 alloy pins per pedal (US Size),
pair 40 pins

Weight: pair 244g with 40 alloy pins **249,90€**
For DH-use, rider weight max. 90 Kg



NEW

244g

Reverse Pedal Pocket – Scratch Protector

scratch protection for your car, when
you drop your bike after a super ride
& six beers into your car ... :-)

To avoid that you damage your car,
yourself ... or your friends bikes ...

Have fun – Ride Reverse

Pair: **11,90€**

NEW



for more products www.reverse-components.com

Reverse Black ONE Pedal

309g

Material

Super Lightweight
Alloy Pedal, CrMo Axle

Features

Pedal size 100*100mm

Pedal height 15mm

Pin height 4mm above platform

Needle bearing &
2 Industrial bearing sealed,
exchangeable pins,

Alloy body with 20 alloy
pins per pedal (US Size),
pair 40 pins

Weight: pair 309g
with 40 alloy pins

Colours anodized

Pedal: black

Pins: black, red,
gold, orange,
dark-blue, light-blue,
dark-green, light-green,
purple

119,90€

Optional available: Steel
pins, they are stronger and
longer lasting, but create
more weight!



Reverse Escape Pedal

Material

Alloy Pedal
CrMo Axle

79,90 €

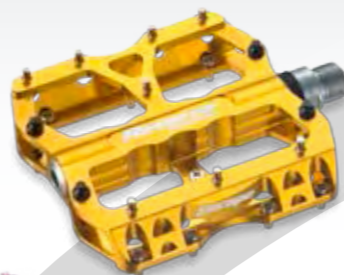
Features

pedal size: 100x100mm
pedal height: 16mm
Weight: pair 406g with alloy pins
Ball bearings/ Du-Bushings
16 Steel Pins & 8 Alloy Pins per Pedal
All spare parts are available
(pins, axles, bearings, bushings
separately available)

Colours anodized

black, dark-blue, purple, chrome, green,
sandmetallic, red, orange, candy (paint),
lightblue, yellow (paint), gold, white (paint)

**BEST
SELLER!**



Reverse Escape PRO Pedal

Material

Lightweight Alloy Pedal,
CrMo Axle

Colours anodized

black-black, black-red,
black-gold

Features

Pedal size 100*100mm, Pedal height 15 mm
Pin height 4mm above platform
DU bushing & Industrial bearing
sealed, exchangeable pins,
Alloy body with 22 alloy pins (14x US Size & 8xM4
pins per pedal body)

Weight: pair 368g with 44 alloy pins

99,90 €



US Size Pins
Many colors
Total 11mm long, thread 8mm
Thread Type:
(US-size ANSI 6-32)



Reverse Super Shape

Material

Alloy and CrMo axle

Colours anodized

Black ,white, blue, red, yellow

Features

CrMo axle with 9/16 thread and
big platform 100*95*20mm
thinn 3-D Shape & Diamond surface for
excellent grip.
taper ball bearing, exchangeable pins,

Alloy body with 20 steel pins (M4)
Inclusive 5 extra pins and mounting tool.

Weight: pair 439g with 20 steel pins

39,90 €



Fred Austray, Reverse Team Rider 

Photo by Thomas Girmond

Reverse Disc Pads

Material

Organic and sinter metallic available **12,90€**
16,90€

Features

for Avid, Hayes, Formula, Magura, Shimano



Reverse Disc Brake Bolts

Material 3,90€

Steel

Features

Weight: 22g (Set 4 pc)
M6 x 18mm

Colours

red, blue, gold



Reverse Disc Rotor Bolts

Material 6,90€

Steel / Grade 10.9

Features

Torx T25 Bolt / Screw M5 x 10mm

Colours

black, blue, red, gold



Reverse Disc Rotor

Features

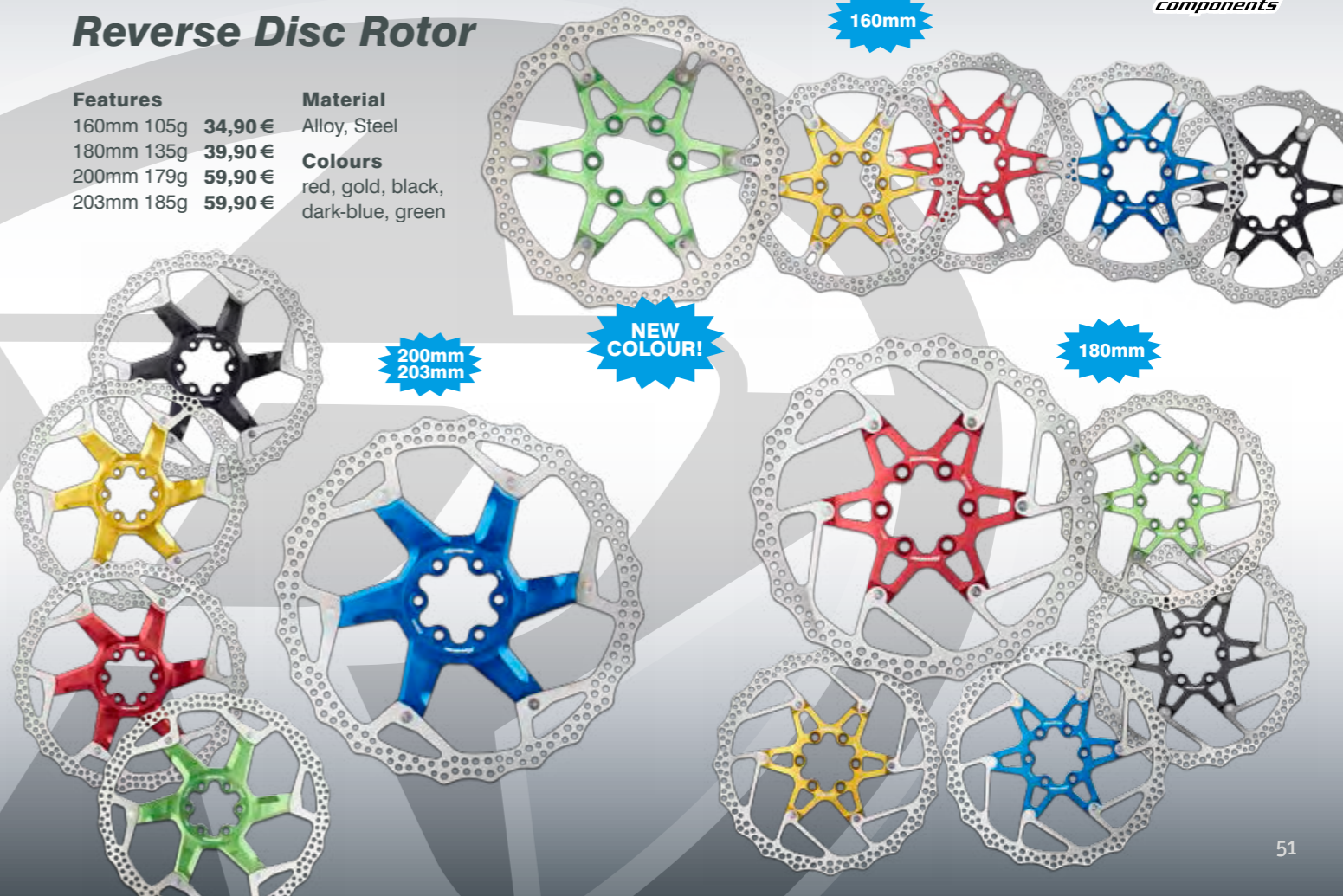
160mm 105g **34,90€**
180mm 135g **39,90€**
200mm 179g **59,90€**
203mm 185g **59,90€**

Material

Alloy, Steel

Colours

red, gold, black,
dark-blue, green



Reverse Chaining Bolts

Material

AL 7075

Colours

black, dark-blue, gold, red, green, orange, purple, light-blue

Features

Length 7mm
Weight: 9g (Set 8pc)

The Reverse chaining alloy bolts are available as a set. Easily mount with 5mm & 6mm allen keys. Bolt set 8pc: 4 x Bolts with Nuts & 4 x 2mm washers.

11,90€



Reverse ultralight Spacers

Material

Alloy

Features

Sizes and weights:
5mm (2,1g)
10mm (4,4g)

Colors

black, purple, dark- blue, light-blue, gold, green, red, orange

9,90€



Nico Vink, Reverse Pro Team Rider 

Photo by Fabian Rapp

Reverse Trigger Clamp

Material

Alloy

Features

for Sram trigger shifters
Weight: 11g

Colours

black, dark-blue, light-blue, dark-green, light-green, red, orange, purple, gold, candy (paint), white (paint)

14,90€



for more products
www.reverse-components.com

EVO 9 Pro HR 135mm

Features

3 in 1 System (135/10mm, 135/12mm, 142/12mm)
32 hole
4 sealed bearings
3 paw system
Weight: 295g

Colours anodized

black, red, purple, gold
dark-blue, white (paint)

Material

AL 6061 T6

159,90 €

Features:

150/12mm
32 hole
4 sealed bearings
Alloy 3 paw cassette body
Weight: 305g

Material:

AL 6061 T6

Colours anodized:

black, red, purple, dark-blue, gold, white (paint)

Reverse EVO 9 Pro HR 150mm

169,90 €

EVO 9 Pro VR

Features

4 in 1 System (20mm/ 5mm/ 9mm/ 15mm)
32 hole
2 sealed bearings
Weight: 185g (20mm Version)

Colours anodized:

black, red, purple,
dark-blue, gold
white (paint)

Material

AL 6061 T6

89,90 €

3 in 1 System

295g

185g

4 in 1 System

305g

20 mm



+



Basic adapter
9,90 €

+



= 5 mm 9,90 €
quick release

= 9 mm 9,90 €
thru axle

+



= 15 mm 9,90 €
thru axle



XX1 Free hub

Available and compatible with all EVO 9 Pro hubs 69,90 €

135/12 mm

+



= 10 mm 32,90 €
Fits all standard MTB



+



= 142/12 mm
19,90 €

+



= Ø 10mm
for MTB's with Ø10mm
thru axle 14,90 €

150/12 mm

+



= 157/12 mm
19,90 €

Adapter for EVO 9 Pro front hub

4 in 1 System

How to do: Take off the 20mm side cap so you got the press ring which holds the 20mm cap separately. Now take the basic adapter instead of the 20mm side cap. The press rings have to be replaced and pressed into the gap. The press ring fixes the basic adapter. Then plug in the adapter (5mm or 9mm or 15mm).

From now on you can change the adapter within a minute.

3 in 1 System

All EVO-9 Pro rear hubs 135/12mm can be used directly as 12mm or 10mm thru axle hub. Including the newly developed standard quick release through-axle 12mm reduced to 10mm. So you can use this hub in every standard MTB. An optional axle set allows you to change the hub to the new 142/12mm standard.

135/12mm + 135/10mm + 142/12mm + 150/12 + 157/12 is possibly

With the Reverse 157/12mm axle you can modify your standard 150/12mm hub to the new standard 157/12mm.

Reverse QR Axles

12/10mm for 135mm Hubs
The universal help – our best seller!

The QR 135/12mm quick release thru-axle reduces 12mm to 10mm
 Weight: 85g

This axle makes it possible to use the 135/12mm hub in every standard MTB.

Optionally available is a 12mm reduced to 10mm bolt through-axle with nut.
 Weight: 62g



24,90 €

29,90 €

Reverse Cassette Lock Ring

Material
 Alloy

Features

To lock a cassette on a freehub.
 For MTB and Road Hubs from 8-11 Speed
 Weight: 7g

Colors

black, purple, dark-blue, light-blue, gold, light-green, red, orange

6,90 €



Reverse Hub adapter reducer tube

Material
 Alloy

Colours
 red

Features

Reduces Ø 12mm hubs to Ø 10mm * 135mm
 Weight: 11,8g

14,90 €



Reverse EVO Axles

Material
 Alloy

Colours
 black

Features

For Shimano X12/142mm
 Length: 172mm
 Weight: 94g
 For Sram X12/142mm
 Length: 174mm
 Weight: 86g
 For Syntace X12/142mm
 Length: 164mm
 Weight: 89g

39,90 €



for more products
www.reverse-components.com



Reverse Wheelset 928 26" FR-DH



Features

Reverse Evo 9 hubs **front:** Ø20mm, **rear:** 150mm /157mm optional
Rim dimensions: width outside: **28,5mm**
Reverse 928 rim 32 hole tubeless ready!
Sapim D-light spokes, Sapim alloy nipples

Weight set: 1677g*

Colours:

Hubs/nipples: black

Rims: black-grey, black-yellow

599,00 €



Reverse Wheelset 922 26" XC-AM Multi Use



Features

Reverse Evo 9 hubs **front:** Ø20mm/15mm/QR, **rear:** 135mm/10+12mm, optional 142/12
Rim dimensions: width outside: **23mm**
Reverse 922 rim 32 hole tubeless ready!
Sapim D-light spokes, Sapim alloy nipples

Weight set: 1448g*

Colours hubs/rims/nipples: black

599,00 €

*Weight +/- 5% production tolerance



Reverse Wheelset 650B 27.5" Enduro Multi Use

Reverse Evo 9 hubs **front:** Ø20mm/15mm/QR, **rear:** 135mm/10+12mm, optional 142/12

Reverse 650B rim 32 hole, tubeless ready!
Rim dimensions: width outside: **28,5mm**
Sapim D-light spokes, Sapim alloy nipples
Weight set: 1731g*

Colours:

Hubs/nipples: black

Rims: black-grey, black-yellow, black-green

599,00 €



Reverse Wheelset 650B 27.5" XC-AM Multi Use

Reverse Evo 9 hubs **front:** Ø20mm/15mm/QR, **rear:** 135mm/10+12mm, optional 142/12

Reverse 650B rim 32 hole, tubeless ready!
Rim dimensions: width outside: **25mm**
Sapim D-light spokes, Sapim alloy nipples
Weight set: 1544g*

599,00 €

Reverse Wheelset 650B 27.5" DH

Reverse Evo 9 hubs **front:** Ø20mm,
rear: 150mm/optional 157mm

Reverse 650B rim 32 hole, tubeless ready!
Rim dimensions: width outside: **31mm**
Sapim D-light spokes, Sapim alloy nipples

Colours:

Hubs/nipples: black

Rims: black-grey, black-yellow, black-green

Weight set: 1959g*

599,00 €

Reverse wheel set information

All wheel sets are handmade. All Reverse Rims can be combined with all Reverse hubs. Sapim Nipples are available in red, black, gold, blue, purple.

We only use Sapim spokes and Sapim nipples in combination with Reverse EVO 9 Pro multifunction hubs with industrial sealed bearings.

These are the ingredient for a professional wheelset.

ENJOY THE RIDE - RIDE REVERSE !

for more products

www.reverse-components.com



Reverse Wheelset DH/FR 26"

Features

Reverse Evo 9 hubs	with 135mm hub 389,00 €
Reverse 934 rims 32 hole	with 150mm hub 399,00 €
Sapim D-light spokes	White Rim:
Sapim alloy nipples	with 135mm hub 389,90 €
All hubs are convertible!	with 150mm hub 415,90 €

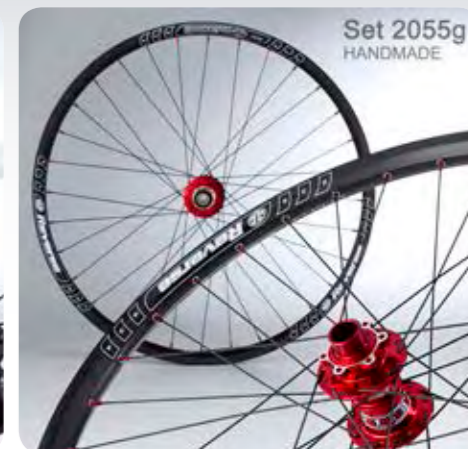
Weight set: 2055g* / 20mm / 135mm hub

Weight set: 2065* / 20mm / 150mm hub

Colours hubs: black, red, gold, white, blue, purple

Colours rims: black, white

Colours nipples: black, red, gold, blue



Reverse Wheelset FR/Enduro 26"

Features

Reverse Evo 9 hubs	with 135mm hub 389,90 €
Reverse 930 rims 32 hole	with 150mm hub 415,90 €
Sapim D-light spokes	
Sapim alloy nipples	
All hubs are convertible!	

Weight set: 1879g* / 20mm / 135mm hub

Weight set: 1889g* / 20mm / 150mm hub

Colours hubs: black, red, gold, white, blue, purple

Colours rims: white

Colours nipples: black, red, gold, blue



Reverse 29er Rim 29" XC

Rim dimensions: Height: 18mm
Width outside: 25mm, Maximum 90kg body weight
Width inside: 20mm, Weight: 393g*

89,90 €

Reverse 29er Rim 29" AM/Enduro

Rim dimensions: Height: 18,5mm
Width outside: 28,5mm, Maximum 120kg body weight
Width inside: 23mm Weight: 485g*

89,90 €

Reverse 650B 27.5" XC/AM

Rim dimensions: Height: 18mm
Width outside: 25mm, Maximum 90kg
Width inside: 20mm, body weight
Weight: 366g*

89,90 €

Reverse 650B 27.5" FR/Enduro

Rim dimensions: Height: 18,5mm
Width outside: 28,5mm, Maximum 120kg
Width inside: 23mm, body weight
Weight: 448g*

89,90 €

Reverse 650B 27.5" Downhill

Rim dimensions: Height: 22 mm
Width outside: 31mm, Maximum 120kg
Width inside: 25mm, body weight
Weight: 560g*

89,90 €

Reverse 922 Rim 26"

Rim dimensions: Height: 17,5mm
Width outside: 22,5mm, Maximum 85kg body weight
Width inside: 18mm, Weight: 315g*

89,90 €

Reverse 928 Rim 26"

Rim dimensions: Height: 18,5mm
Width outside: 28,5mm, Maximum 120kg body weight
Width inside: 23mm, Weight: 422g*

89,90 €

Reverse 930 Rim 26"

Material 32 hole
6061 H T6 stainless steel eyelets, pin joint
Colour Width: 30mm, Height: 19mm
white Weight: 535g*

59,90 €

Reverse 934 Rim 26"

Material 32 hole
6061 H T6 stainless steel eyelets, pin joint
Colour Width: 32mm, Height: 21mm
black, white Weight: 618g*

59,90 €

*Weight +/- 5% production tolerance



All Rims: 29er, 650B, 922, 928

Material: Dextro Alloy
32 hole, Tubeless ready!

The Lightweight Reverse DEXTRO-Alloy rim has excellent tensile strength in comparison to 6061 T6 aluminum.

Reverse Single-Speed Kit

Material
alloy spacers
steel cog

Colours anodized
black, red, green, gold,
orange, purple, dark-blue,
light-blue

Features

Set: 7 spacer for a perfect chainline including
13T cog and lockring in spacer color.
Optional available cog sizes from 13T-18T & 20T

Spacer sizes: 2pc 10mm, 1pc 5mm,
4pc 3mm+ Lockring
weight: 50g (set)

25,90 €



Reverse Disc Brake Adapter

Material
alloy

Colours anodized
black, red, dark-blue, gold, light-blue,
green, orange, purple

Features

different sizes for Avid and Shimano

IS Front Ø 160mm + Rear Ø 140mm **12,90 €**

IS Front Ø 180mm + Rear Ø 160mm **12,90 €**

IS Rear Avid 60 IS (Ø200) + 40 IS (Ø 180) **14,90 €**

IS Rear Shimano Ø 203mm + 180mm **12,90 €**

PM Ø 180mm Post 20mm **9,90 €**

PM Ø 203mm **16,90 €**

PM Ø200 Post 40mm **16,90 €**



Reverse Frame protection kit

Transparent adhesive
stickers 12pc, extremely
flexible

9,90 €



Benny Strasser (l.), Joshua Bart (r.), Reverse Pro Team Rider



Niklas Hoos, Reverse Team Rider



Hannes Slavik, Reverse Pro Team Rider 

Photo by Markus Slavik



Nico Vink, Reverse Pro Team Rider 

Photo by Fabian Rapp



Reverse
components

BE PART OF THE FAMILY



Reverse Team




Luca Biver, Reverse Team Rider 

Photo by Ben Helm



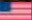
Fabian Rapp (l.), Bobby Root (r.), Reverse Pro Team Rider 

Photo by Fabian Rapp




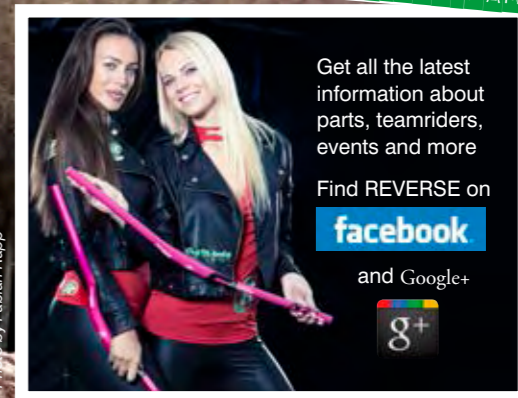
Tracey Hannah, Reverse Pro Team Rider 

Photo by Dave Trumpoyle



Benny Strasser, Reverse Pro Team Rider 

Photo by Fabian Rapp



Get all the latest information about parts, teamriders, events and more

Find REVERSE on



and Google+



Hannes Slavik, Reverse Pro Team Rider  Photo by Markus Slavik



Reverse
components



RIDE REVERSE!

www.reverse-components.com

REVERSE COMPONENTS
Europe

Rudolf-Diesel-Straße 13
72250 Freudenstadt, Germany

Fon: +49 (0)7441 / 952-450
Fax: +49 (0)7441 / 952-451

info@reverse-components.com
www.reverse-components.com